

FOR JOANA



One size

Yarn aprox. 100g-520m (568 yards)
light violet

Some beads for flower

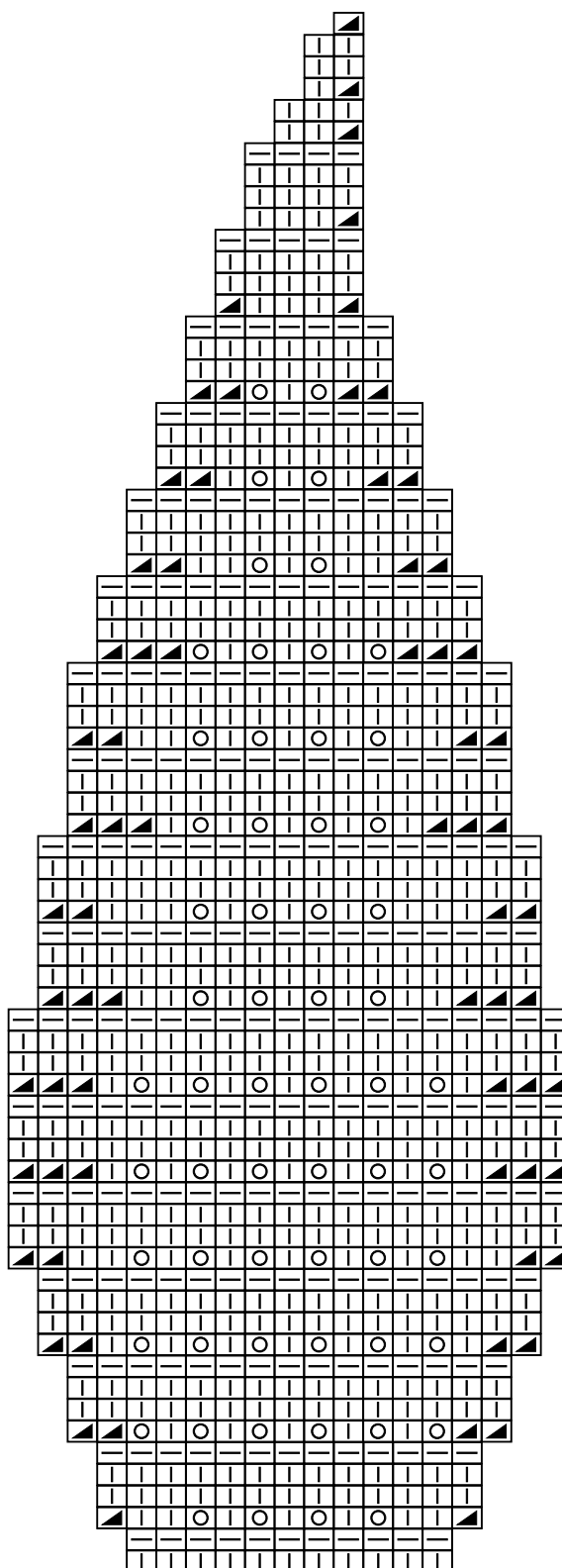
Needles:
size 3.5 mm – rib. K2/P2
size 4.0 mm - beret.

Tension: 20 sts – 10 cm double yarn

Beret:

Cast on 101 sts (99 sts+2 edge sts) on needle size 3.5 mm. Work in K2/P2 rib until work measures 3 cm. Switch to needle size 4 mm, continue in pattern. Make 9 repeats of the chart. After 71 rows there are 11 sts on the needle. Cut the thread and pull through remaining sts. Sew back seam.

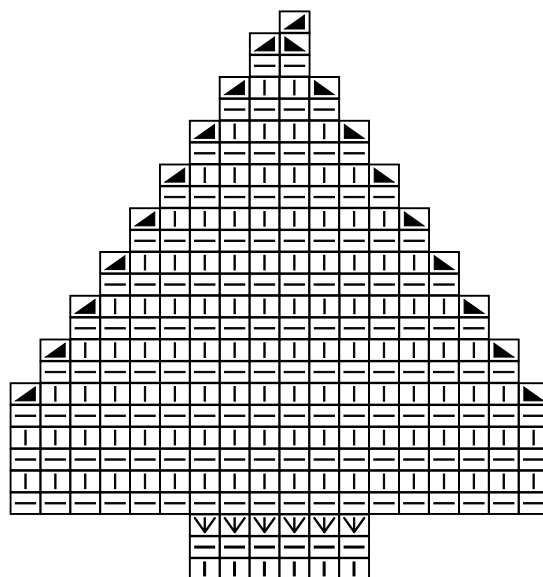
This pattern is based on
Drops Design 109-51
<http://www.garnstudio.com>



The diagram shows the pattern from the RS

- ▮ – K
- ▬ – P
- – yo
- ▴ – K2tog

FOR JOANA



The diagram shows the pattern from the RS.
Edge sts aren't shown.

Flower

Cast on 8 sts (6sts + 2edge sts) on needle size 4 mm. Work in pattern. Make 5 the same petals, sew them at the bottom. Sew on some beads.

- ☐ - K
- ☐ - P
- ▴ - K2tog
- ▾ - Ssk
- ▽ - Kfb

Pictures, diagrams and descriptions are not for comercial use.